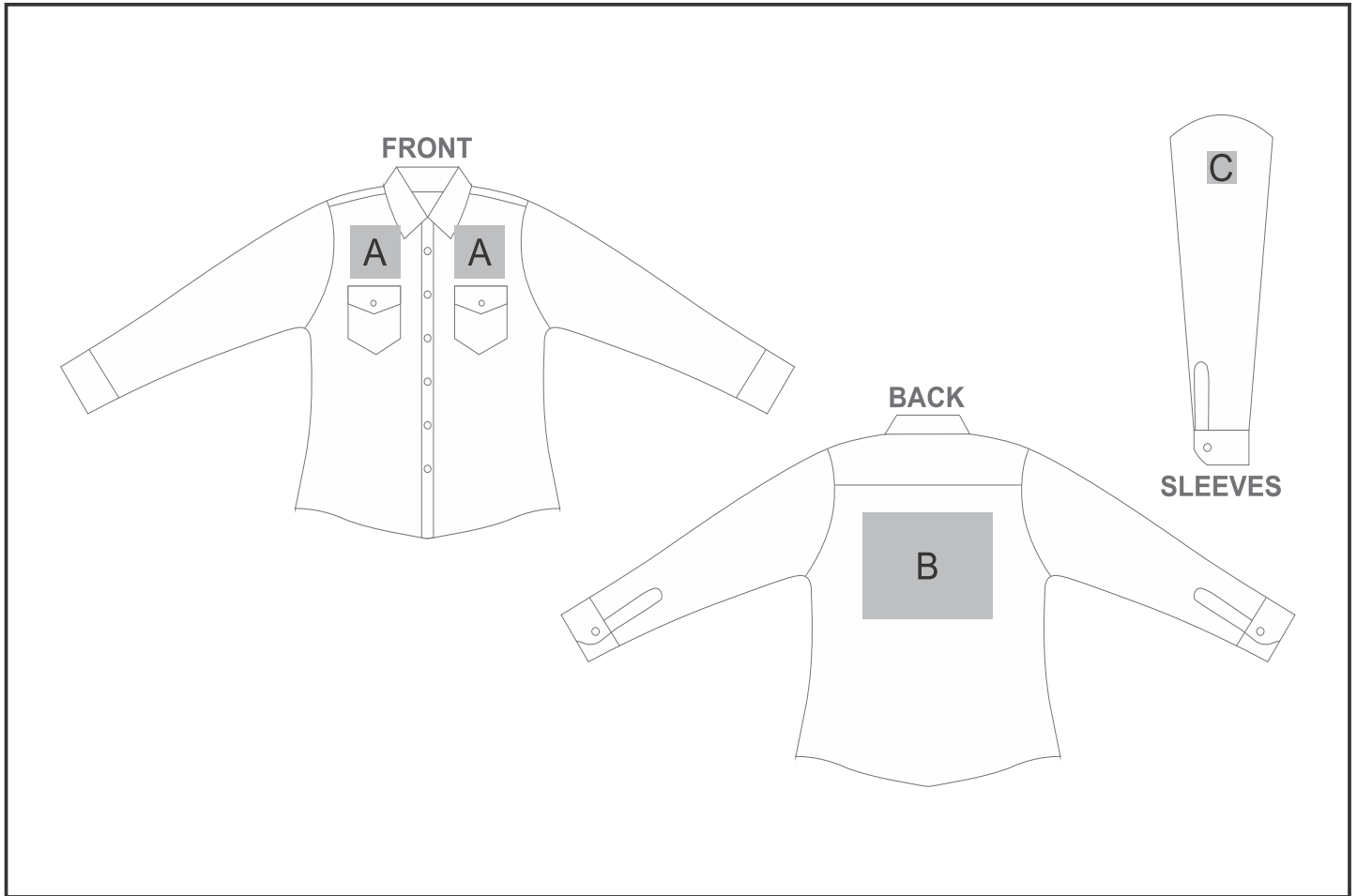


BAS-11205

Ladies Long Sleeve Eastwood Shirt



Need to know:

- Includes 1-Position Embroidery OR 1-Position Digital Transfer (setup fees apply)
- Cannot guarantee a 100% straight branding on any clothing item with check or stripe detail
- **EMB/DTC inclusive Parameters:** Left/Right Chest=100mm x 100mm OR Back = 8000mm²

Branding Options:

Position	Branding Method (Branding Code)	No. of Colours	Dimension
A	Embroidery (EM-CLOTHING)	N/A	100mm wide x 100mm high
A	Screen Print (SA)	6 Colours	100mm wide x 80mm high
A	Digital Transfer Clothing A6 (DTC-A6)	Full Colour	100mm wide x 100mm high
A	Silicone (STP-A)	N/A	30mm wide x 30mm high
A	Silicone (STP-B)	N/A	50mm wide x 50mm high
A	Silicone (STP-C)	N/A	80mm wide x 80mm high
A	Silicone (STP-D)	N/A	100mm wide x 40mm high

B	Embroidery (EM-CLOTHING)	N/A	180mm wide x 150mm high
B	Screen Print (SA)	6 Colours	200mm wide x 260mm high
B	Digital Transfer Clothing A6 (DTC-A6)	Full Colour	148mm wide x 105mm high
B	Digital Transfer Clothing A5 (DTC-A5)	Full Colour	180mm wide x 148mm high
B	Silicone (STP-A)	N/A	30mm wide x 30mm high
B	Silicone (STP-B)	N/A	50mm wide x 50mm high
B	Silicone (STP-C)	N/A	80mm wide x 80mm high
B	Silicone (STP-D)	N/A	120mm wide x 40mm high

C	Embroidery (EM-CLOTHING)	N/A	50mm wide x 50mm high
C	Screen Print (SA)	6 Colours	60mm wide x 60mm high
C	Digital Transfer Clothing A6 (DTC-A6)	Full Colour	50mm wide x 50mm high
C	Silicone (STP-A)	N/A	30mm wide x 30mm high
C	Silicone (STP-B)	N/A	50mm wide x 50mm high