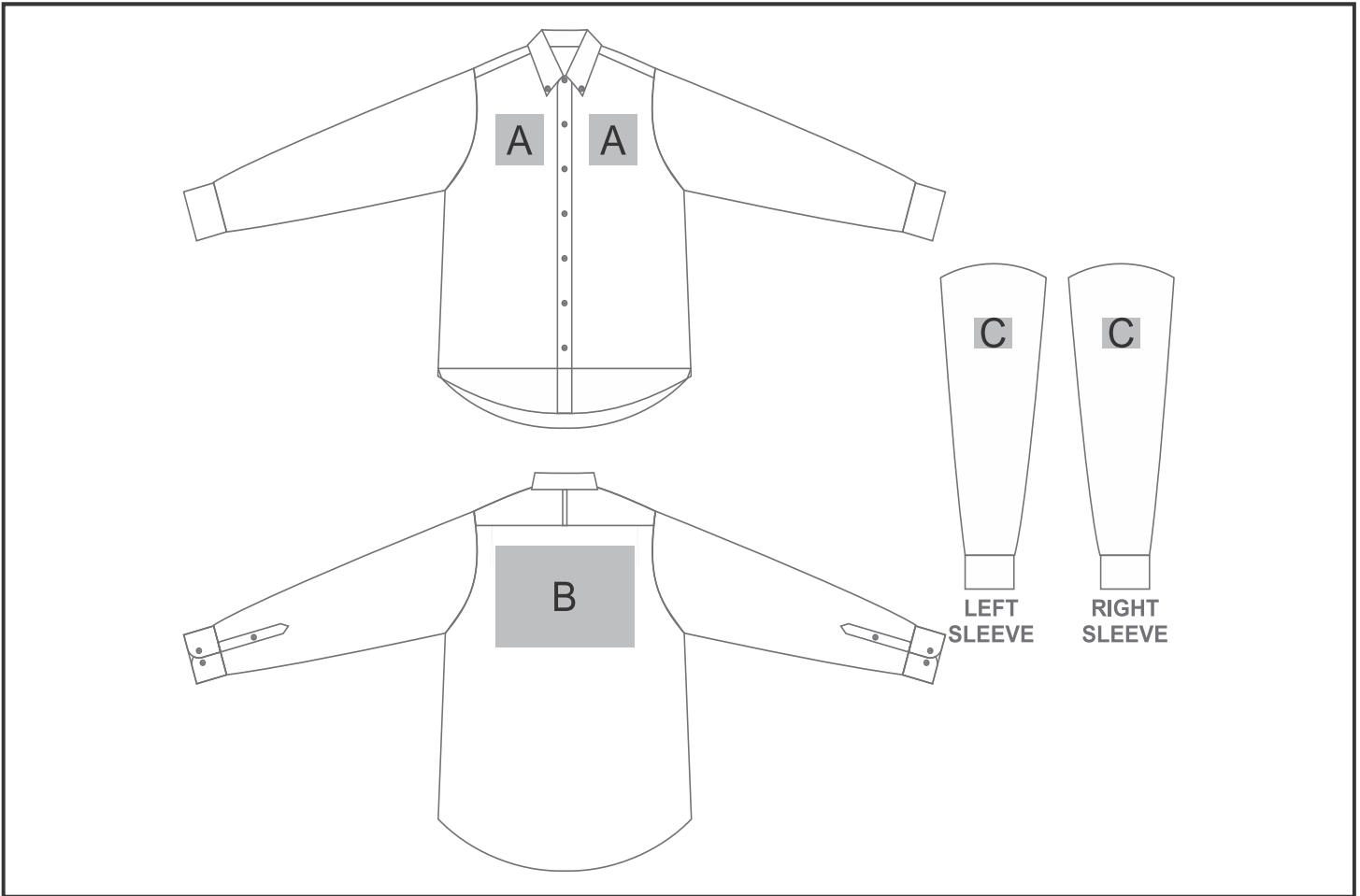


CW-UB-198-A

Mens Long Sleeve Ashford Shirt



Need to know:

Includes 1-Position Embroidery or 1-Position Digital Transfer (setup fees apply)

- **DTC Inclusive Parameters:** Left/Right Chest or Back = 100mm x 100mm

- Cannot guarantee a 100% straight branding on any clothing item with check or stripe detail

Branding Options:

| Position | Branding Method (Branding Code) | No. of Colours | Dimension |
|----------|---------------------------------------|----------------|-------------------------|
| A | Embroidery (EM-CLOTHING) | N/A | 100mm wide x 100mm high |
| A | Screen Print (SA) | 3 Colours | 100mm wide x 100mm high |
| A | Digital Transfer Clothing A6 (DTC-A6) | Full Colour | 100mm wide x 100mm high |

| | | | |
|---|---------------------------------------|-------------|-------------------------|
| B | Embroidery (EM-CLOTHING) | N/A | 200mm wide x 200mm high |
| B | Screen Print (SA) | 3 Colours | 260mm wide x 200mm high |
| B | Digital Transfer Clothing A6 (DTC-A6) | Full Colour | 148mm wide x 105mm high |

| | | | |
|---|---------------------------------------|-------------|-------------------------|
| B | Digital Transfer Clothing A5 (DTC-A5) | Full Colour | 210mm wide x 148mm high |
| B | Digital Transfer Clothing A4 (DTC-A4) | Full Colour | 290mm wide x 200mm high |
| C | Embroidery (EM-CLOTHING) | N/A | 80mm wide x 60mm high |
| C | Screen Print (SA) | 3 Colours | 60mm wide x 60mm high |
| C | Digital Transfer Clothing A6 (DTC-A6) | Full Colour | 80mm wide x 80mm high |