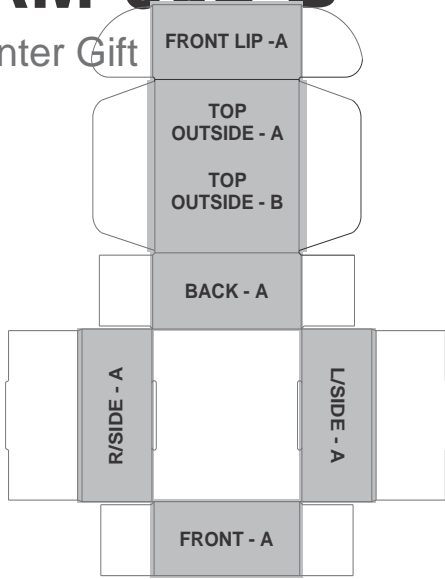


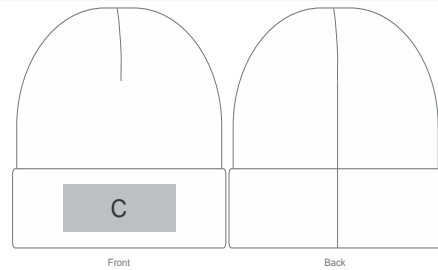
GF-AM-902-B

UNFOLDED FLAT

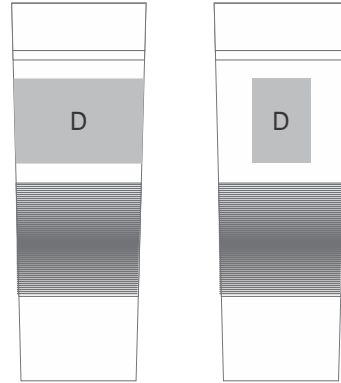
Ridge Winter Gift



SIZE OF BOX: 200mm x 225mm x 95mm



Branding below drinking spout



Screen Wrap Laser Engraving / Pad Print



Need to know:

- Includes 1-Position Direct Print on Box AND 1-Position Laser Engraving OR 1-Colour, 1-Position Screen Wrap on Tumbler (setup fee applies)

- **Please Note:** Due to the nature of the printing process, any white in a logo cannot be branded and we cannot guarantee an exact colour match as the box has a matt finish. The nature and inconsistency of the pre-cut boards may create a 1-3mm of unbranded space on the front lip and imperfections maybe be found within the print. Large solid coverage prints are not recommended, if large solid coverage is required, it is recommended on kraft boxes as imperfections are less noticeable.

- **Please note:** On all thick materials like fleece & blankets, logos with fine detail or text, a block will be added in tonal thread to avoid artwork from sinking into the fabric

- Laser Color: Brown

Branding Options:

| Position | Branding Method (Branding Code) | No. of Colours | Dimension |
|----------|--------------------------------------|----------------|-------------------------|
| A | Digital Custom Packaging (DCP-CHG-5) | Full Colour | 423mm wide x 738mm high |
| B | Digital Custom Packaging (DCP-CHG-5) | Full Colour | 192mm wide x 210mm high |
| C | Embroidery (EM-BEANIES) | N/A | 100mm wide x 40mm high |
| D | Laser Engraving (LB) | N/A | 33mm wide x 45mm high |
| D | Pad Printing (PC) | 4 Colours | 33mm wide x 45mm high |

| | | | |
|---|------------------|----------|------------------------|
| D | Screen Wrap (SW) | 1 Colour | 180mm wide x 45mm high |
|---|------------------|----------|------------------------|

| | | | |
|---|-----------------------|-----|-------------------------|
| E | Embroidery (EM-OTHER) | N/A | 150mm wide x 150mm high |
|---|-----------------------|-----|-------------------------|