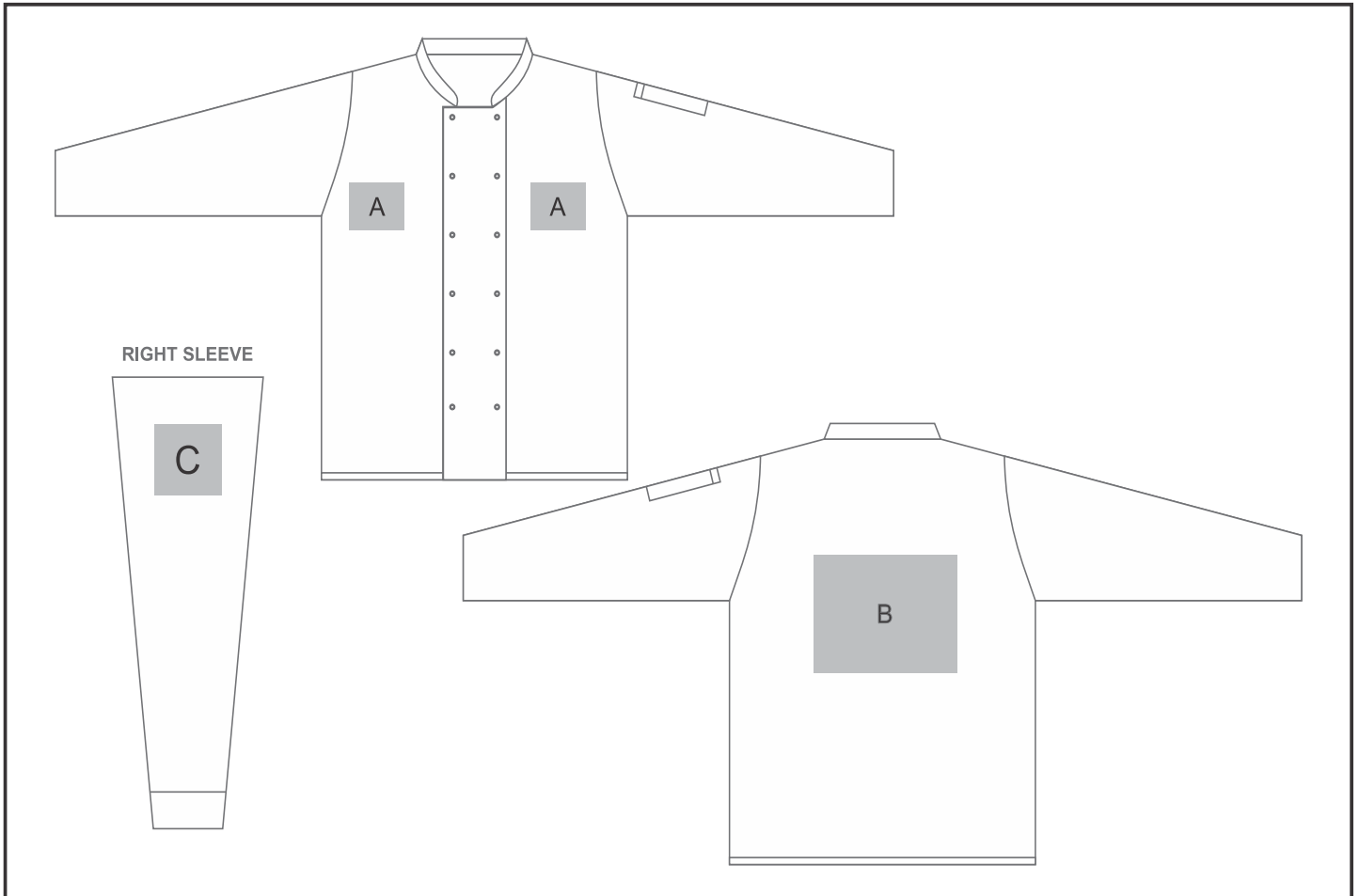


ALT-ZSL

Unisex Long Sleeve Zest Chef Jacket



Need to know:

- Includes 1 Position Embroidery (setup fee applies)
- Cannot guarantee a 100% straight branding on any clothing item with check or stripe detail
- **DTC/EMB inclusive Parameters:** Left/Right Chest or Back = 100mm x 100mm

Branding Options:

| Position | Branding Method (Branding Code) | No. of Colours | Dimension |
|----------|---------------------------------------|----------------|-------------------------|
| A | Embroidery (EMB-A) | N/A | 100mm wide x 80mm high |
| A | Screen Print (SA) | 1 Colour | 100mm wide x 80mm high |
| A | Digital Transfer Clothing A6 (DTC-A6) | Full Colour | 100mm wide x 80mm high |
| A | Silicone (STP-A) | N/A | 30mm wide x 30mm high |
| A | Silicone (STP-B) | N/A | 50mm wide x 50mm high |
| A | Silicone (STP-C) | N/A | 80mm wide x 80mm high |
| A | Silicone (STP-D) | N/A | 100mm wide x 40mm high |
| B | Embroidery (EMB-A) | N/A | 200mm wide x 200mm high |

| | | | |
|---|---------------------------------------|-------------|-------------------------|
| B | Screen Print (SA) | 1 Colour | 260mm wide x 200mm high |
| B | Digital Transfer Clothing A6 (DTC-A6) | Full Colour | 148mm wide x 105mm high |
| B | Digital Transfer Clothing A5 (DTC-A5) | Full Colour | 210mm wide x 148mm high |
| B | Silicone (STP-A) | N/A | 30mm wide x 30mm high |
| B | Silicone (STP-B) | N/A | 50mm wide x 50mm high |
| B | Silicone (STP-C) | N/A | 80mm wide x 80mm high |
| B | Silicone (STP-D) | N/A | 120mm wide x 40mm high |

| | | | |
|---|---------------------------------------|-------------|-----------------------|
| C | Embroidery (EMB-A) | N/A | 80mm wide x 60mm high |
| C | Screen Print (SA) | 1 Colour | 60mm wide x 60mm high |
| C | Digital Transfer Clothing A6 (DTC-A6) | Full Colour | 80mm wide x 80mm high |
| C | Silicone (STP-A) | N/A | 30mm wide x 30mm high |
| C | Silicone (STP-B) | N/A | 50mm wide x 50mm high |
| C | Silicone (STP-C) | N/A | 80mm wide x 80mm high |