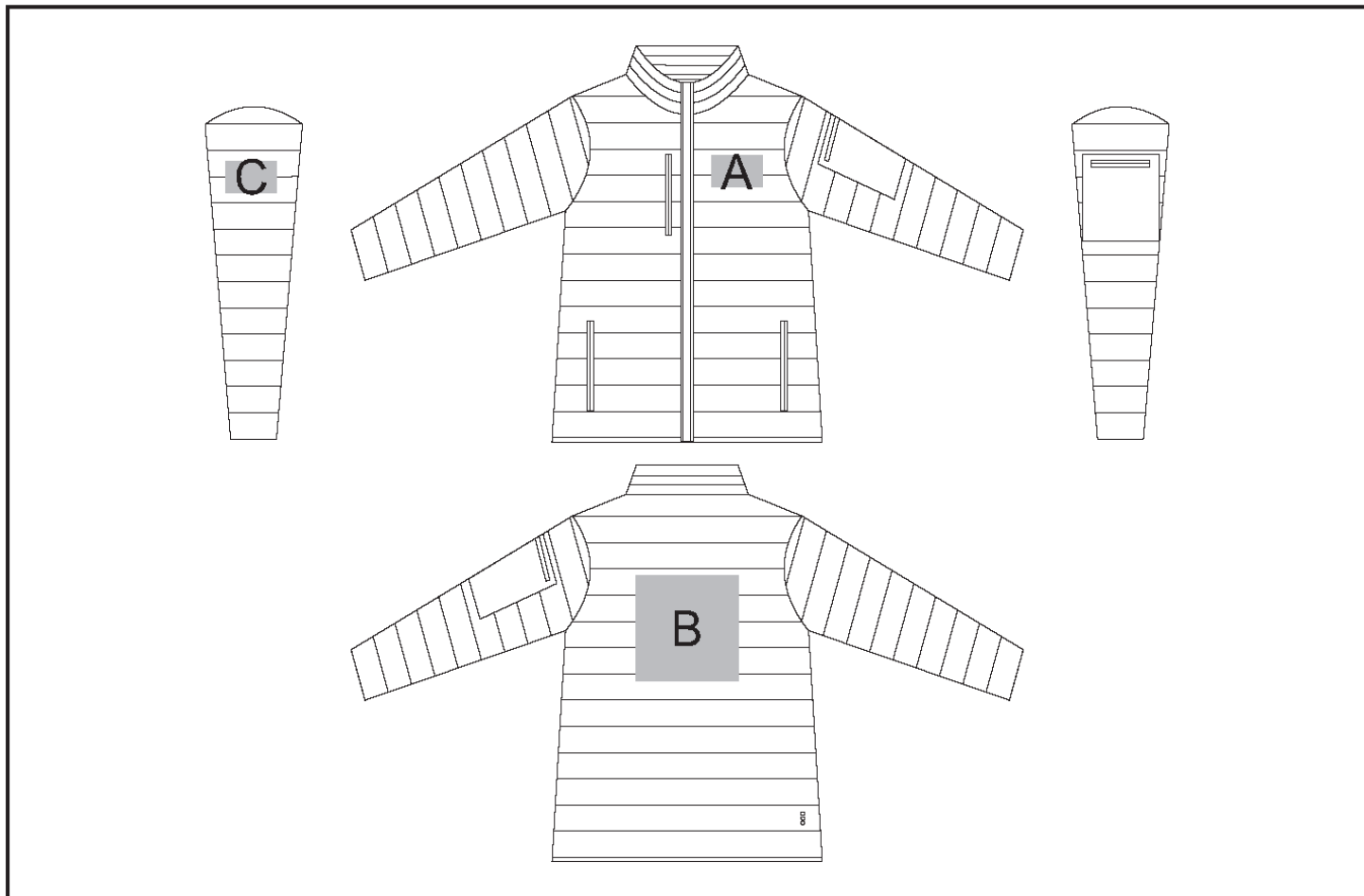


ELE-5610

Mens Scotia Light Down Jacket



Need to know:

- Includes 1-Position Embroidery (setup fee applies)
- EMB inclusive parameters: Left/Right Chest or BACK = 100mm x 100mm
- .- Cannot guarantee a 100% straight branding on any clothing item with check or stripe detail.
- Please note that the panels on the garment are inconsistent from Small to XL.
- The left chest and the back will be branded in the closest panel to standard left chest and back yoke position

Branding Options:

Position	Branding Method (Branding Code)	No. of Colours	Dimension
A	Embroidery (EM-CLOTHING)		100mm wide x 100mm high
B	Embroidery (EM-CLOTHING)		200mm wide x 200mm high

C	Embroidery (EM-CLOTHING)	80mm wide x 80mm high
---	--------------------------	-----------------------